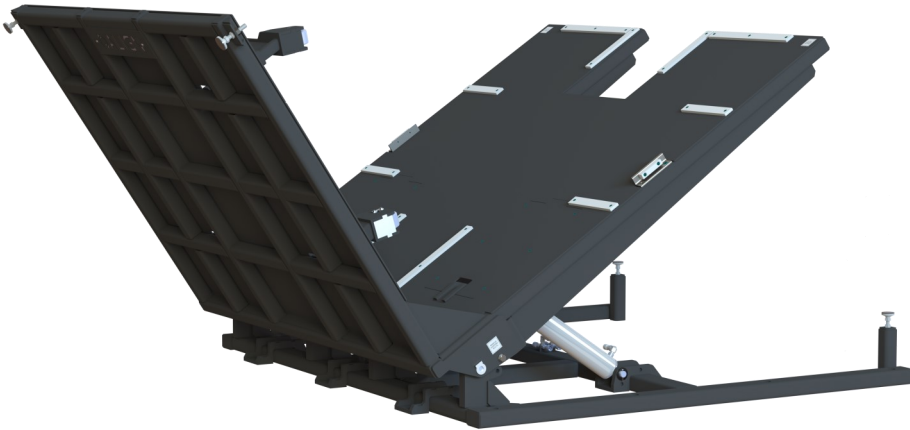


## 90° Hydraulic Upender



Prioritize worker safety by eliminating dangerous overhead crane maneuvers by using 90° Upenders in your assembly or fabrication operation. Our 90° Upenders are designed to flip heavy or large objects 90° to optimize your product's fabrication with the push of a button. Upenders not only offer a safe way to flip products, but they also save substantial time over other methods of flipping products.

Model	Capacity <sup>1</sup> (lbs.)	Diameter (in.)	Table Height (in.)	Speed <sup>2</sup> (RPM)	Accuracy <sup>3</sup> (deg.)
MTT-35-12	3,000	96 – 36	96 – 36	12	60
MTT-35-13	6,000	120 – 48	120 – 36	14	72
MTT-35-14	9,000	120 – 60	120 – 36	18	84
MTT-35-15	12,000	120 – 60	120 – 48	19	90

<sup>1</sup>Based on centrally located load <sup>2</sup>Standard sizes are available in 12 inch increments

Model Number	Common Options	Description
Hand Controller	UE-90-HAND	Standard option for manual positioning
Foot Controller	UE-90-FOOT	Replace hand controls with foot pedal controller
PLC Operated <sup>1</sup>	UE-90-PLC	Replace hand controls with PLC operated controls
Light Stack	UE-90-LIGHT	Light stack to indicate movement
Audible Alarm	UE-90-HORN	Audible alarm to indicate movement
Safety Scanner	UE-90-SCAN	Scanners to protect entry into indexing area
Curb Ring	UE-90-RING	Floor mounted ring to protect entry in indexing area
One-Touch Operation <sup>2</sup>	UE-90-AUTO	Replaces hold-to-run with one-touch operation

<sup>1</sup>Programming supplied by customer <sup>2</sup>Requires UE-90-SCAN safety scanner option